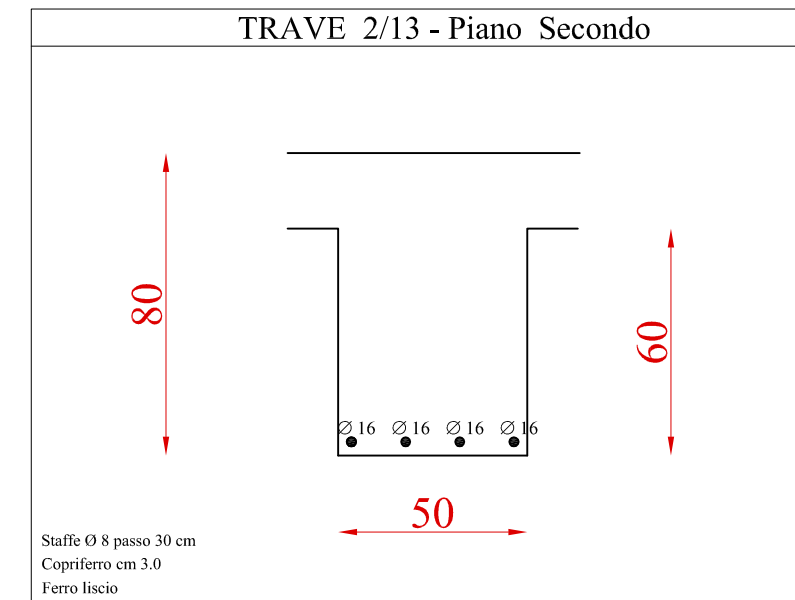
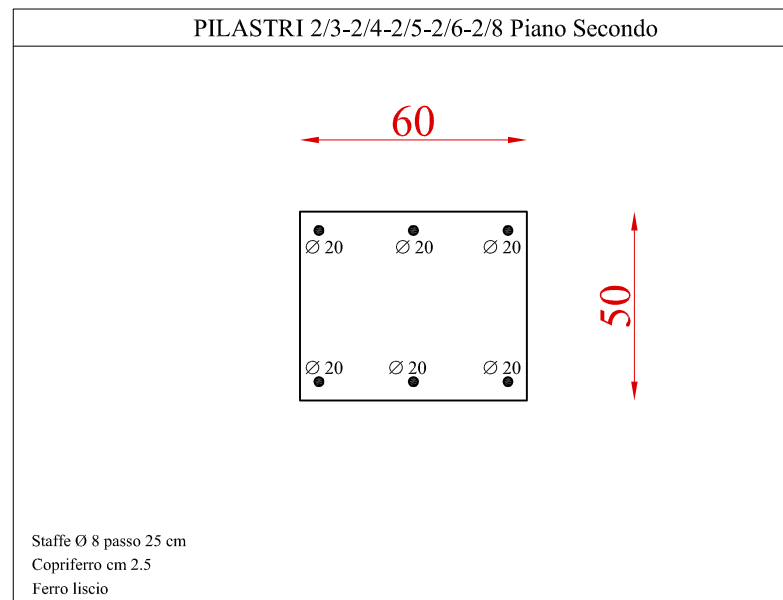
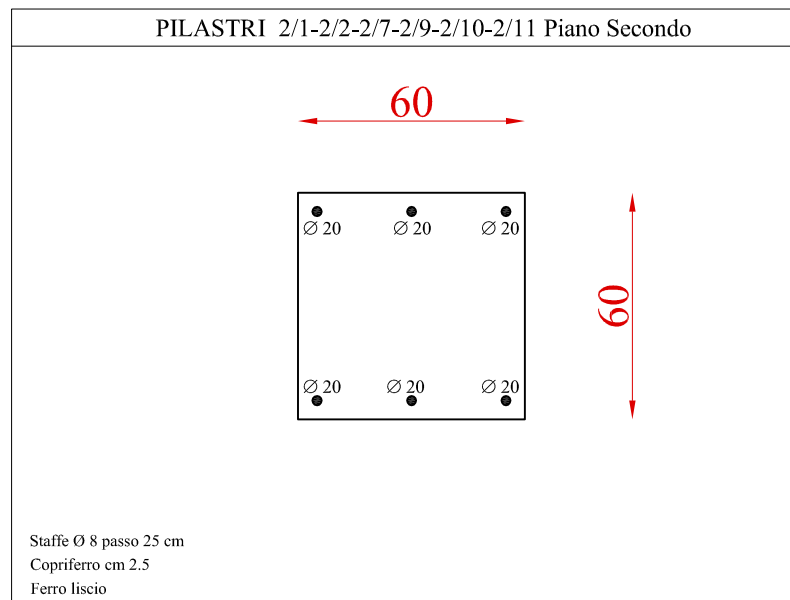


## piano secondo



## piano terzo

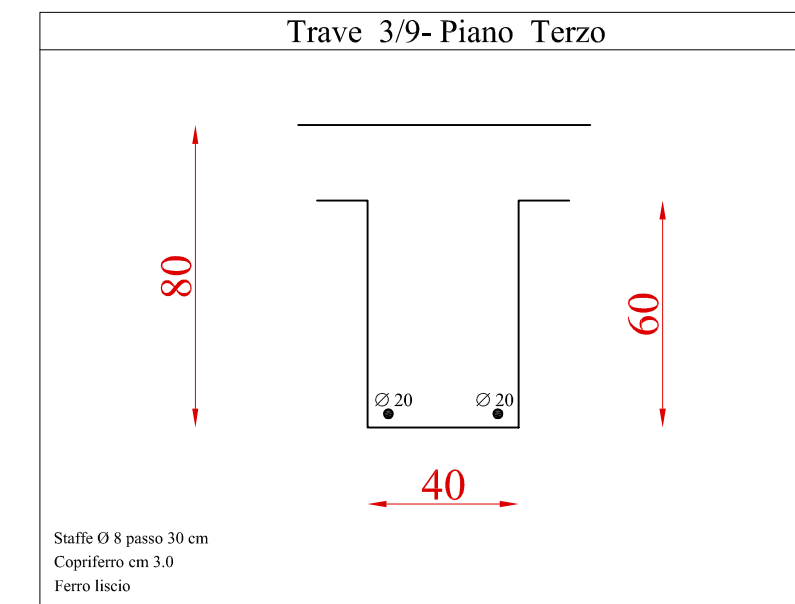
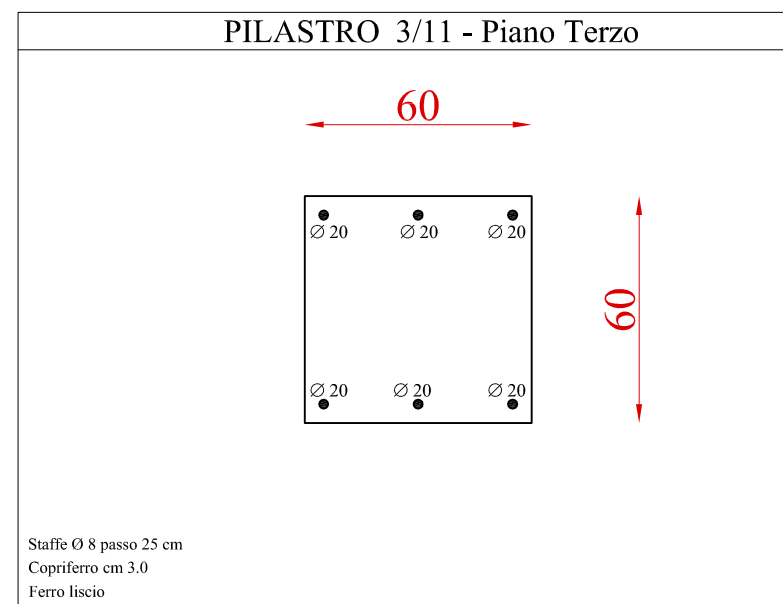
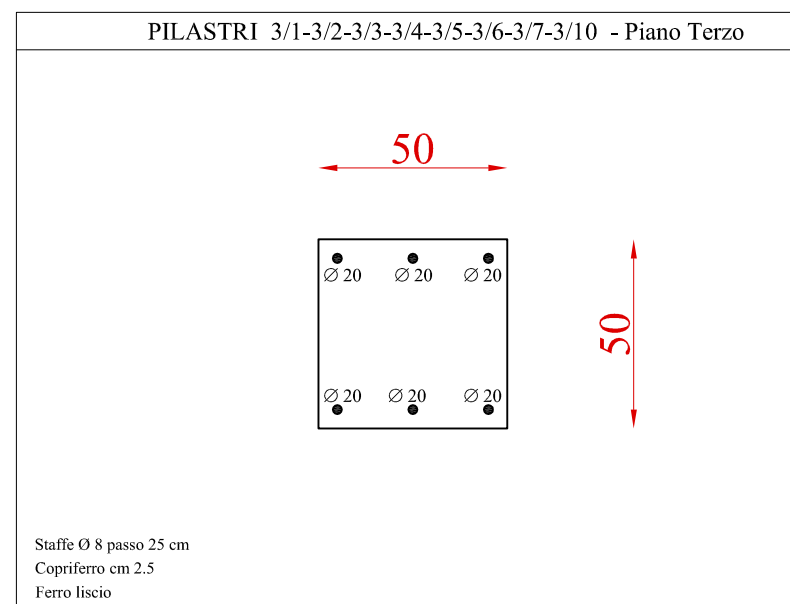


Tabella riassuntiva delle prove pacometriche effettuate

Elemento	Dimensioni	N°. barre	Passo staffe	Copriferro	Piano
Pilastro 2/1-2/2-2/7-2/9-2/10-2/11	60 x 60	6	25 cm	2,5 cm	Secondo
Pilastro 2/3-2/4-2/5-2/6-2/8	60 x 50	6	25 cm	2.5 cm	Secondo
Trave 2/13	50 x 80	Inf.4	30 cm	3.0 cm	Secondo
Pilastro 3/1-3/2-3/3-3/4-3/5-3/6-3/7-3/10	50 x 50	6	25 cm	2.5 cm	Terzo
Pilastro 3/11	50 x 60	6	25 cm	3.0 cm	Terzo
Trave 3/9	40 x 80	Inf.2	30 cm	3.0cm	Terzo

Scala: 1: 20